

NATURAL GRAPHITE AS ANODE FOR LITHIUM-ION BATTERIES

Jaromír Makovička

Doctoral Degree Programme (3), FEEC BUT

E-mail: xmakov05@stud.feec.vutbr.cz

Supervised by: Marie Sedlářková

E-mail: sedlara@feec.vutbr.cz

ABSTRACT

This article is aimed on preparing and measuring the negative electrode base on natural graphite.

1. INTRODUCTION

In the world there are two trends in anode materials for Li-ion batteries nowadays. The first one tries to replace synthetic carbon by natural carbon, which is much cheaper than synthetic one and has similar properties [1]. Mesocarbon microbeads belong to a typical representative of synthetic carbon. His properties such as high reversible capacity (320 mAh/g), low irreversible capacity (30 mAh/g), low potential versus metal lithium (below 0.2 V) and good cyclability are very suitable for Li-ion batteries.

The second one employs silicon as anode material instead of carbon and therefore offers more than 10 times higher capacity (4200 mAh/g) [2] than graphite but large volume expansion during lithium ions intercalation leads to destruction of silicon matrix. This problem was partially solved by using silicon nanowires [3] but still the silicon nanowires exhibit high irreversible capacity (1000 mAh/g). Silicon also has higher voltage versus metal lithium (0.4 V) than graphite which decreases the total voltage of Li-ion battery. The work is aimed at the first way.

2. EXPERIMENTAL

The negative electrode was prepared in the following way: The electrode material was prepared by mixing the natural graphite CR 5995 (Maziva s.r.o., Týn n. Vlt., fig.1) with PTFE at weight ratio of 95:5. A small amount of ethanol was added to the mixture for making the proper paste. The resultant paste was coated on the nickel mesh than pressed and dried at 150 °C for 1 h.

The three electrode cell was assembled in the glove box MBRAUN LABMASTER ($H_2O < 5$ ppm $O_2 < 5$ ppm, fig.2) to examine galvanostatic charge/discharge behaviors. A piece of lithium metal (purity 99.9 %) was used as a counter and reference electrode. The working (negative) electrode is described above. 1 M $LiClO_4$ (purity 95 %) in EC-DEC [ethylene carbonate, diethyl carbonate (purity 99.9 %)] was used as electrolyte. The electrode was

charged/discharged between 0 V and 1.5 V (vs.Li) at a constant current of 100 mA/g and 300 mA/g. The AUTOLAB PGSTAT 30 was used for the measurement.

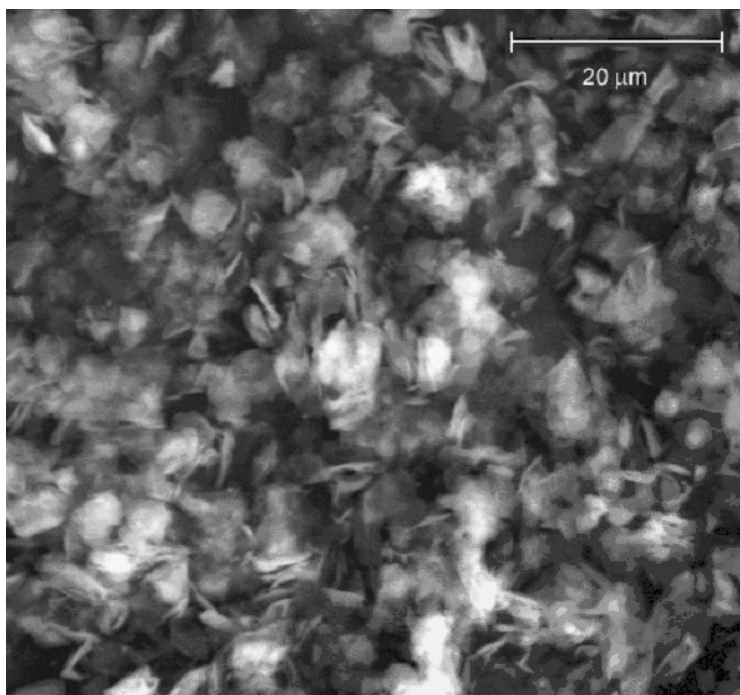


Fig 1: SEM picture of graphite CR 5995



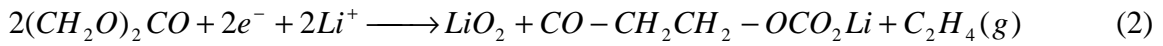
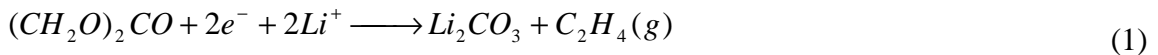
Fig 2: Glovebox Mbraun Labmaster

3. RESULTS AND DISCUSSION

The results are shown in the table 1 and in the figure 2, 3. The results demonstrate that the natural graphite shows promising reversible capacity at the first cycle, which is 82 % capacity related to the composition of LiC_6 . Irreversible capacity is relatively high but only quarter of that can be contributed to SEI formation. .

3.1. SOLID ELECTROLYTE INTERFACE

SEI is a thin film (several nm) consists of decomposition products of electrolyte solvents such as EC (eq.1, 2) [4] which are permeable to Li^+ cation, but are electronically insulating and prevent further electrolyte decomposition. The stability of SEI determines safety, power capability and cycle life of batteries.



Tab. 1: Graphite CR 5995

Reversible capacity 1st cycle (100 mA/g)	305 mAh/g
Irreversible capacity 1st cycle	111 mAh/g
Irreversible capacity 1st cycle due to SEI formation	25 mAh/g
Coulombic efficiency 1st cycle	73 %
Coulombic efficiency 10th cycle (300 mA/g)	98 %
Reversible capacity 4th cycle (300 mA/g)	50 mAh/g
Reversible capacity 20th cycle (100 mA/g)	216 mAh/g

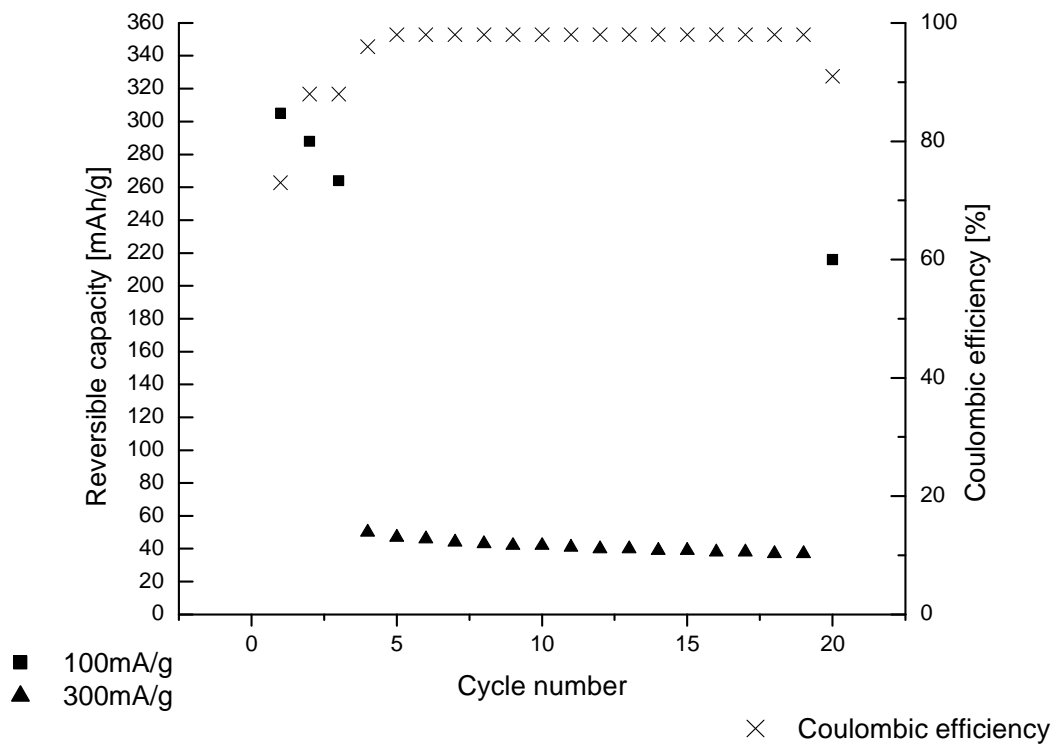


Fig 3: Summarized properties of graphite CR 5995. Crosses: coulombic efficiency, squares: current 100 mA/g, triangles: 300 mA/g

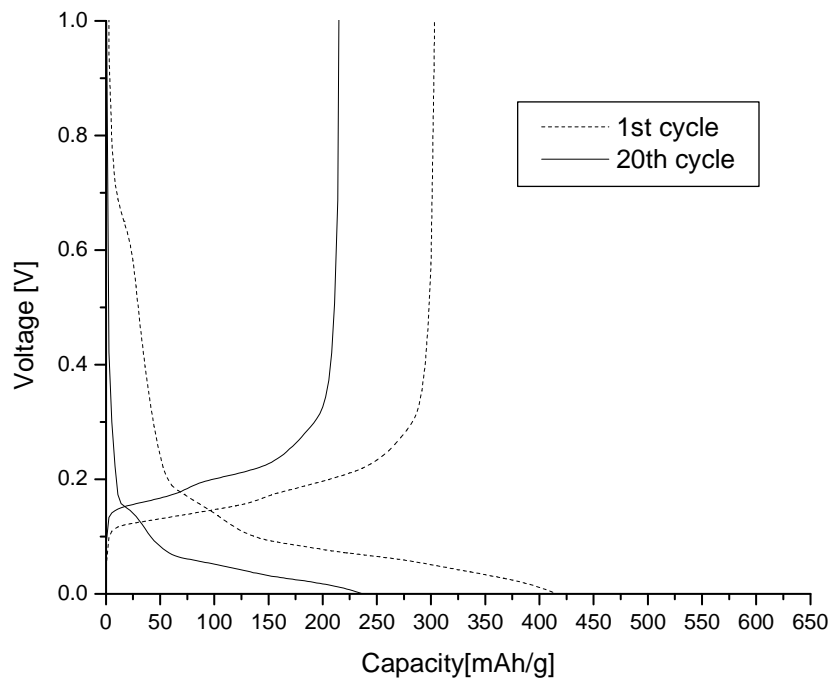


Fig 4: Galvanostatic charging – discharging curves of graphite CR 5995

4. CONCLUSION

The results illustrate that the natural graphite is a promising candidate for anodes in Li-ion batteries but some obstacles such as capacity fading have to be removed.

ACKNOWLEDGEMENT

This work was supported by Ministry of Education (project MSM0021630516) and Ministry of Environment (Grant No. VaVSN/3/171/05).

REFERENCES

- [1] Shim J., Striebel, K., A., Electrochemical characterization of thermally oxidized natural graphite anodes in lithium-ion batteries, *Journal of Power Sources* 164, 865-867, 2007
- [2] Yoshio M., Tsumura, T., Dimov, N., Electrochemical behaviors of silicon based material, *Journal of Power Sources* 146, 10-14, 2005
- [3] Candace K. Chan, Hailin Peng High-performance lithium battery anodes using silicon nanowires, *Nature Nanotechnology* 3,31-35, 2008
- [4] S.Leroy, H.Martinez, R.Dedryvere : Influence of lithium salt nature over the surface film formation on a graphite electrode in Li-ion batteries, *Applied Surface Science* 2006, article in press